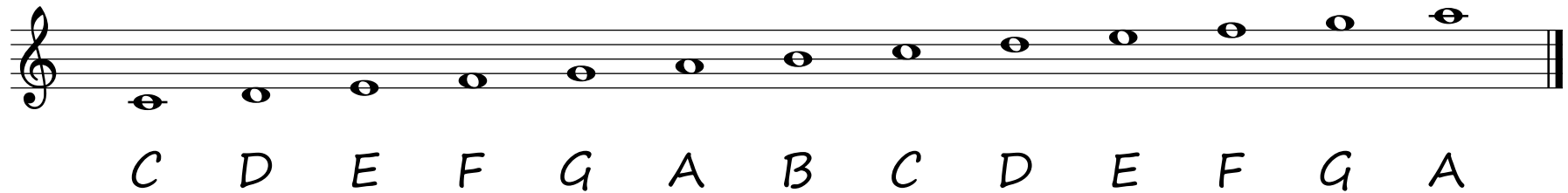
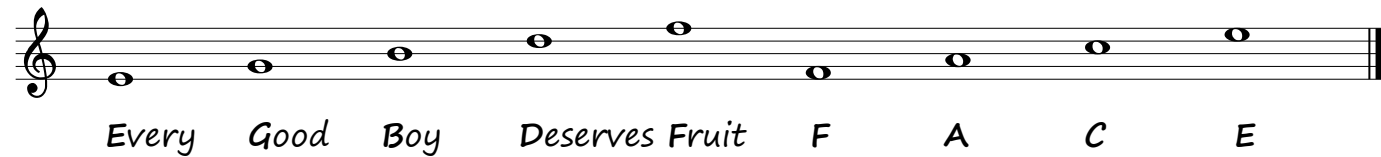


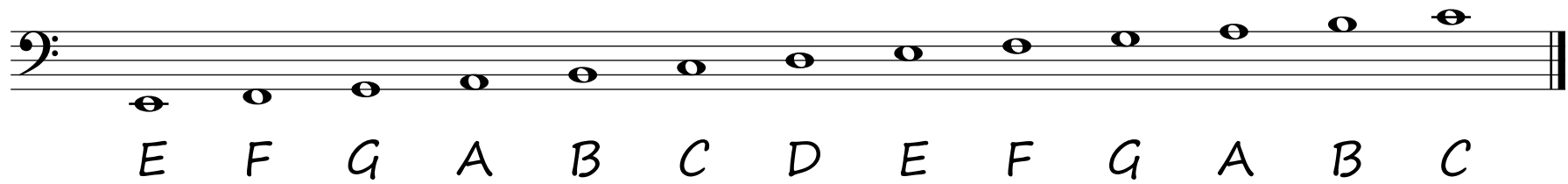
The Treble Clef Notes



Easy way to remember the notes on the lines and spaces.



The Bass Clef Notes



A musical staff with a bass clef on the left. It contains a sequence of 13 quarter notes. The notes are positioned on the lines and spaces of the staff as follows: E (first space), F (first line), G (second space), A (second line), B (third space), C (third line), D (fourth space), E (fourth line), F (fifth space), G (fifth line), A (first space below the staff), B (first line below the staff), and C (second space below the staff).

Easy way to remember the notes on the lines and spaces.



A musical staff with a bass clef on the left. It contains a sequence of 9 quarter notes. The notes are positioned on the lines and spaces of the staff as follows: G (second space), B (third line), D (fourth space), F (fifth space), A (first space below the staff), A (first line below the staff), C (second space below the staff), E (first line below the staff), and G (second space below the staff).



Please follow:

Blog: www.remifamusic.com

Facebook: /remifamusicworksheets

These sheets are free to print and share.

Please do not alter the sheets in anyway.

Happy Teaching and Learning!



*Thanks for
Downloading!*